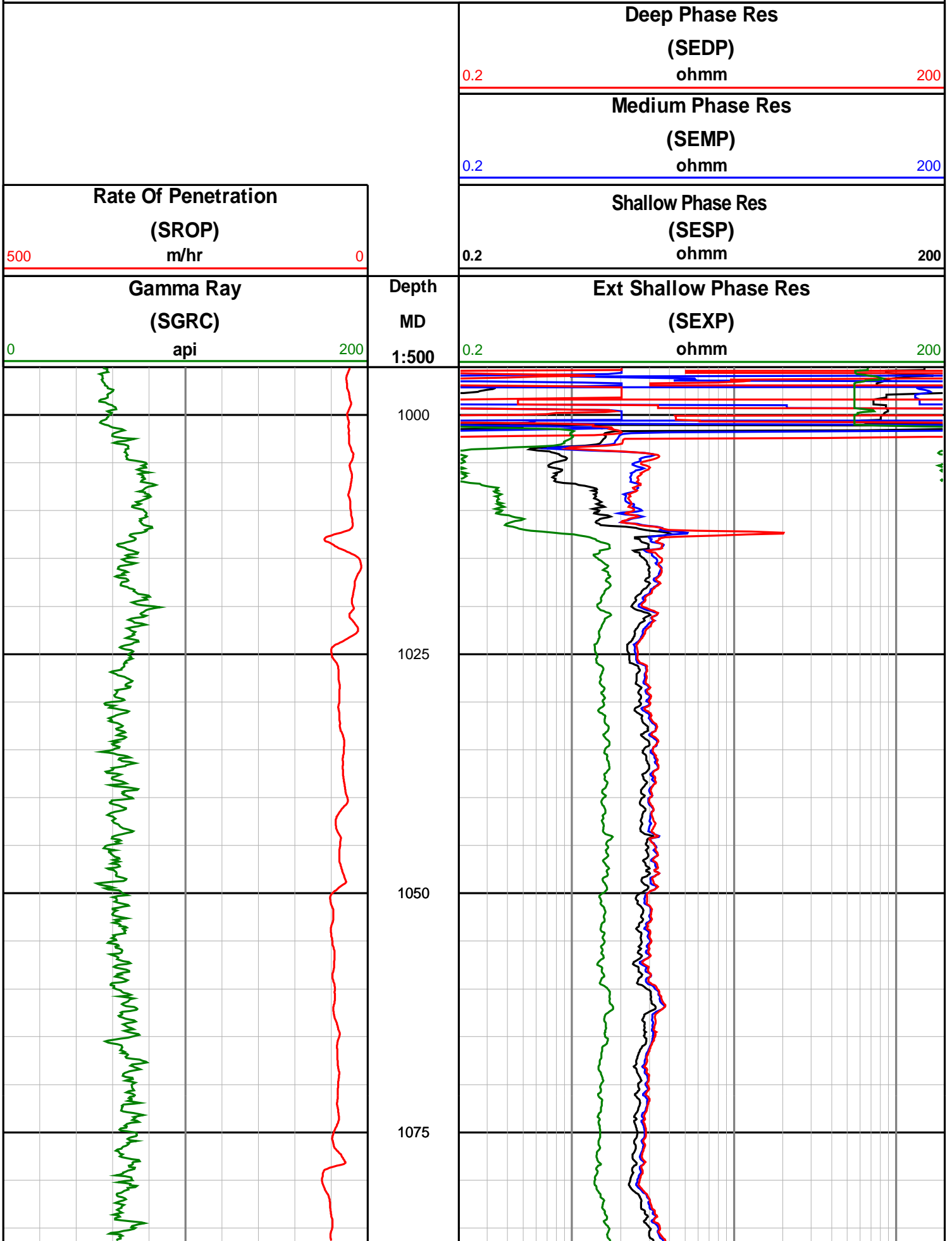
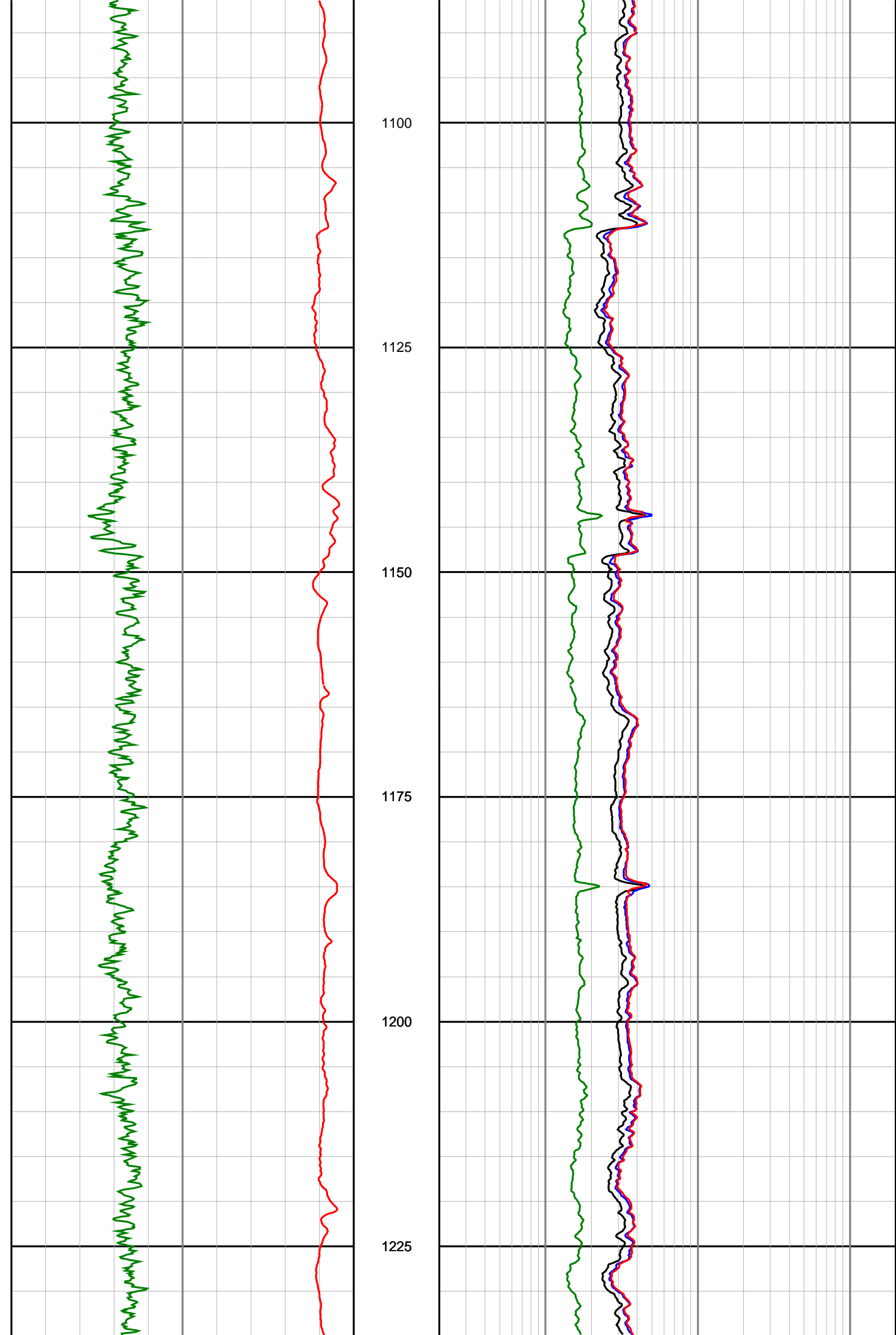


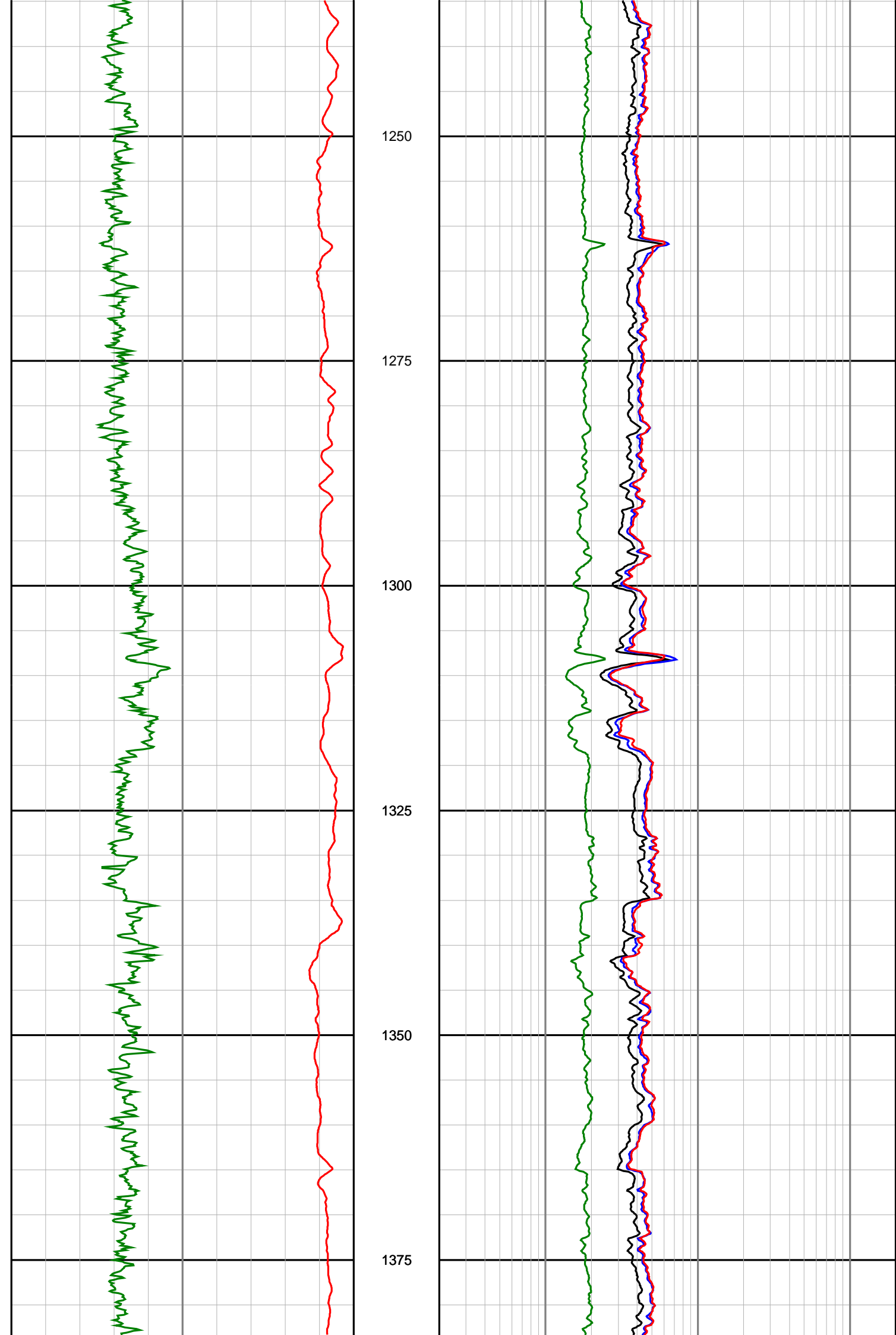
Anzon Australia Ltd

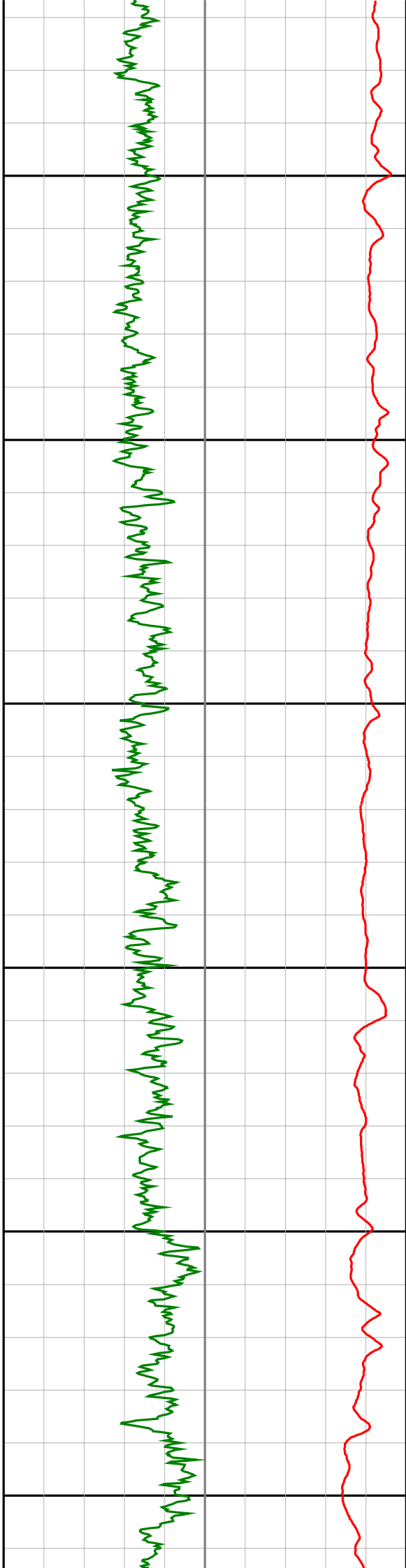
Basker-5

Recorded LWD Log (Permanent Datum - LAT)









1400

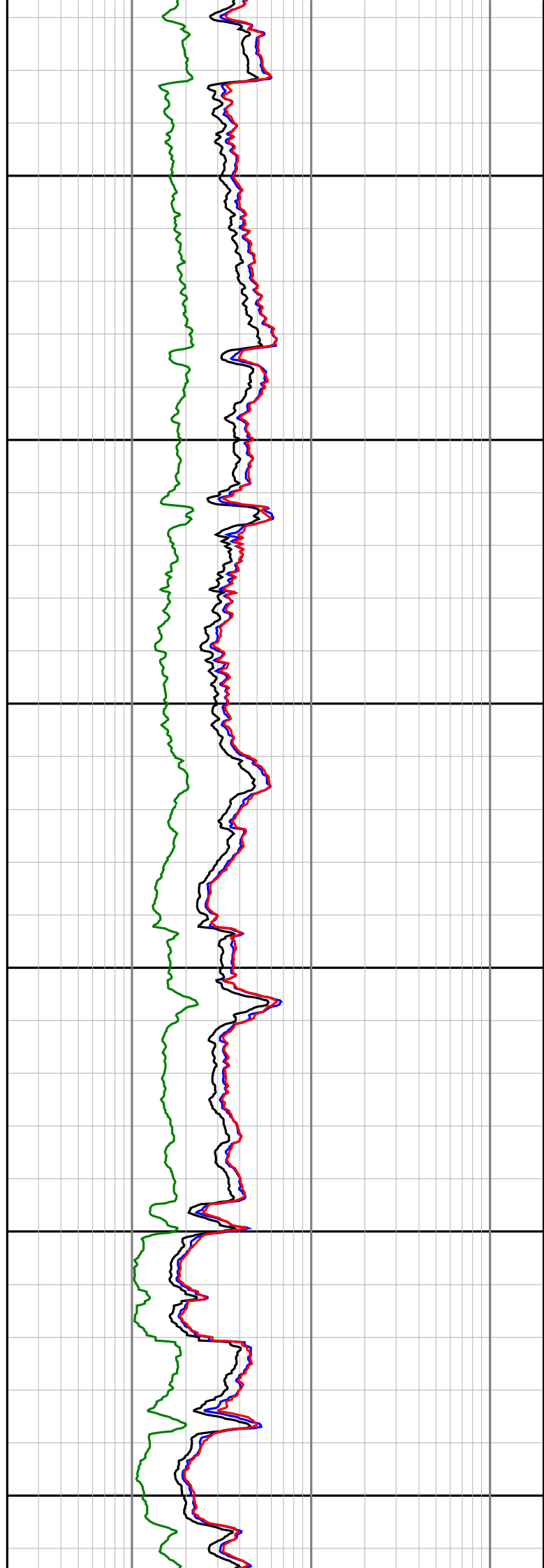
1425

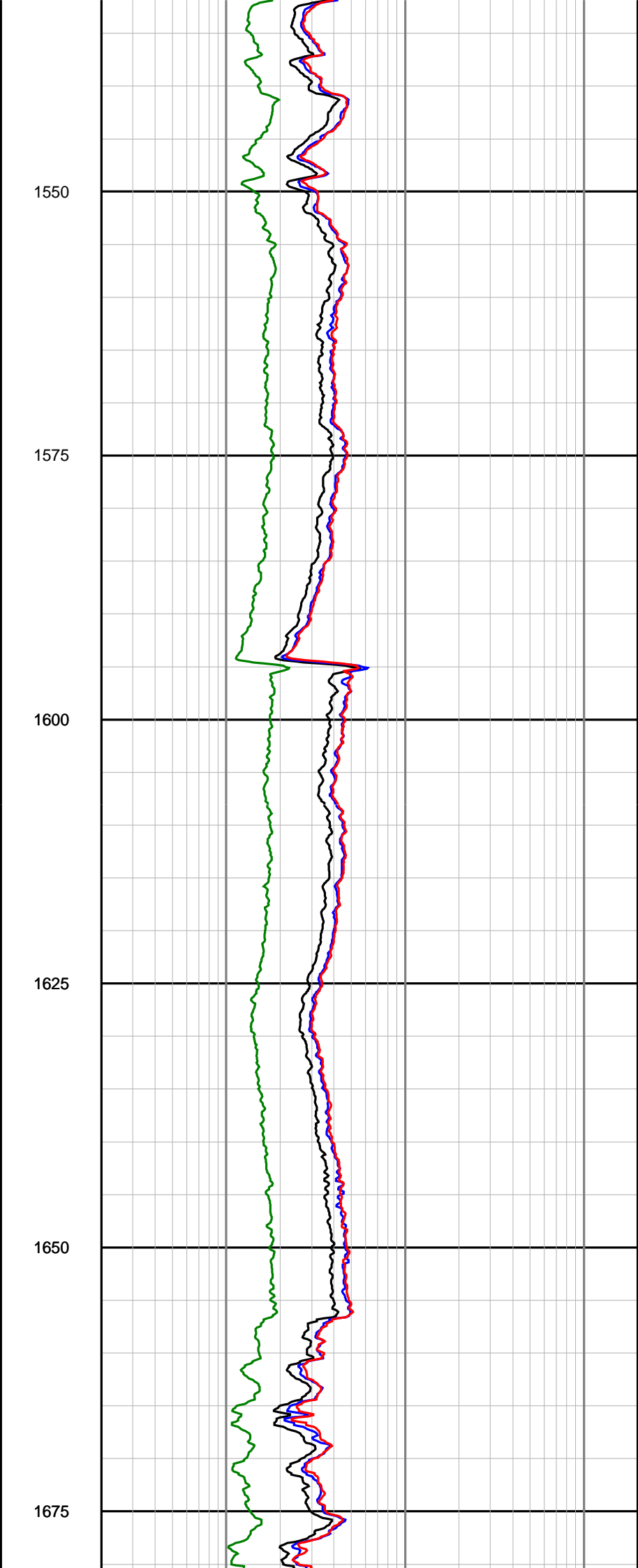
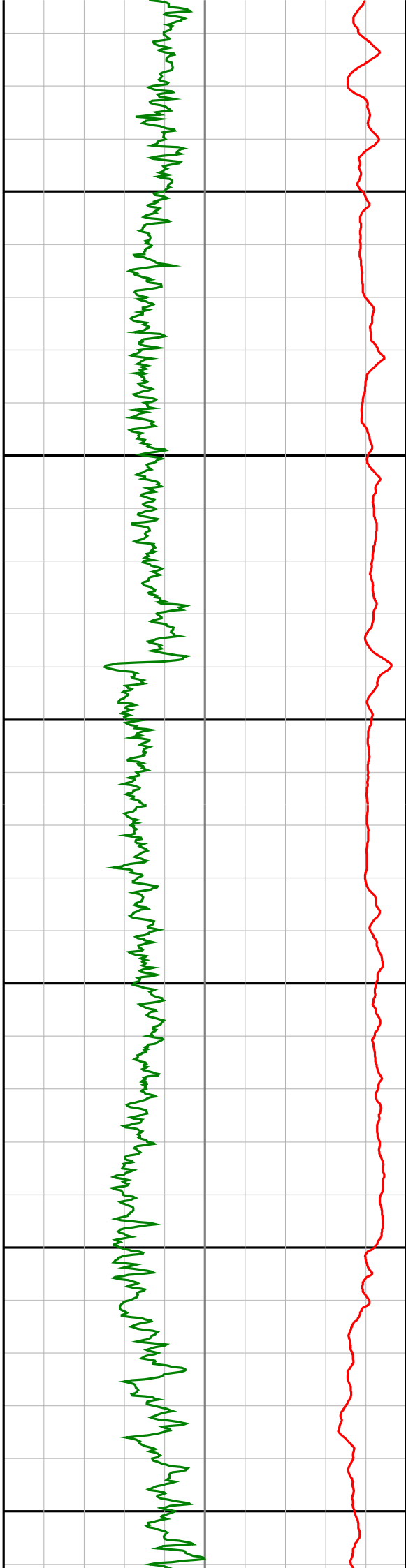
1450

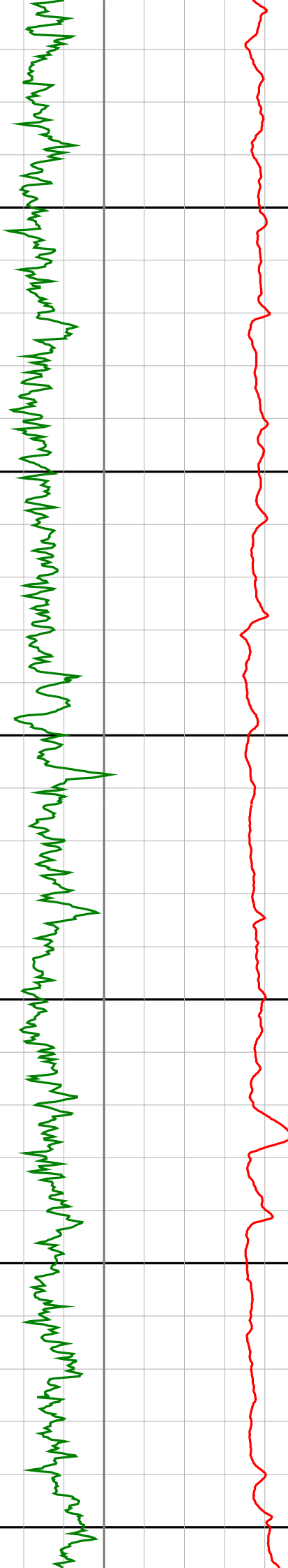
1475

1500

1525







1700

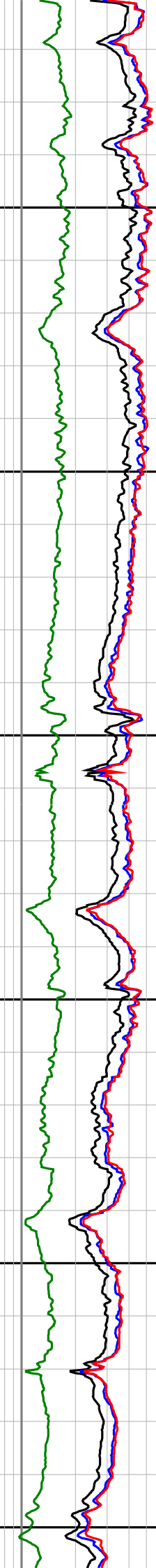
1725

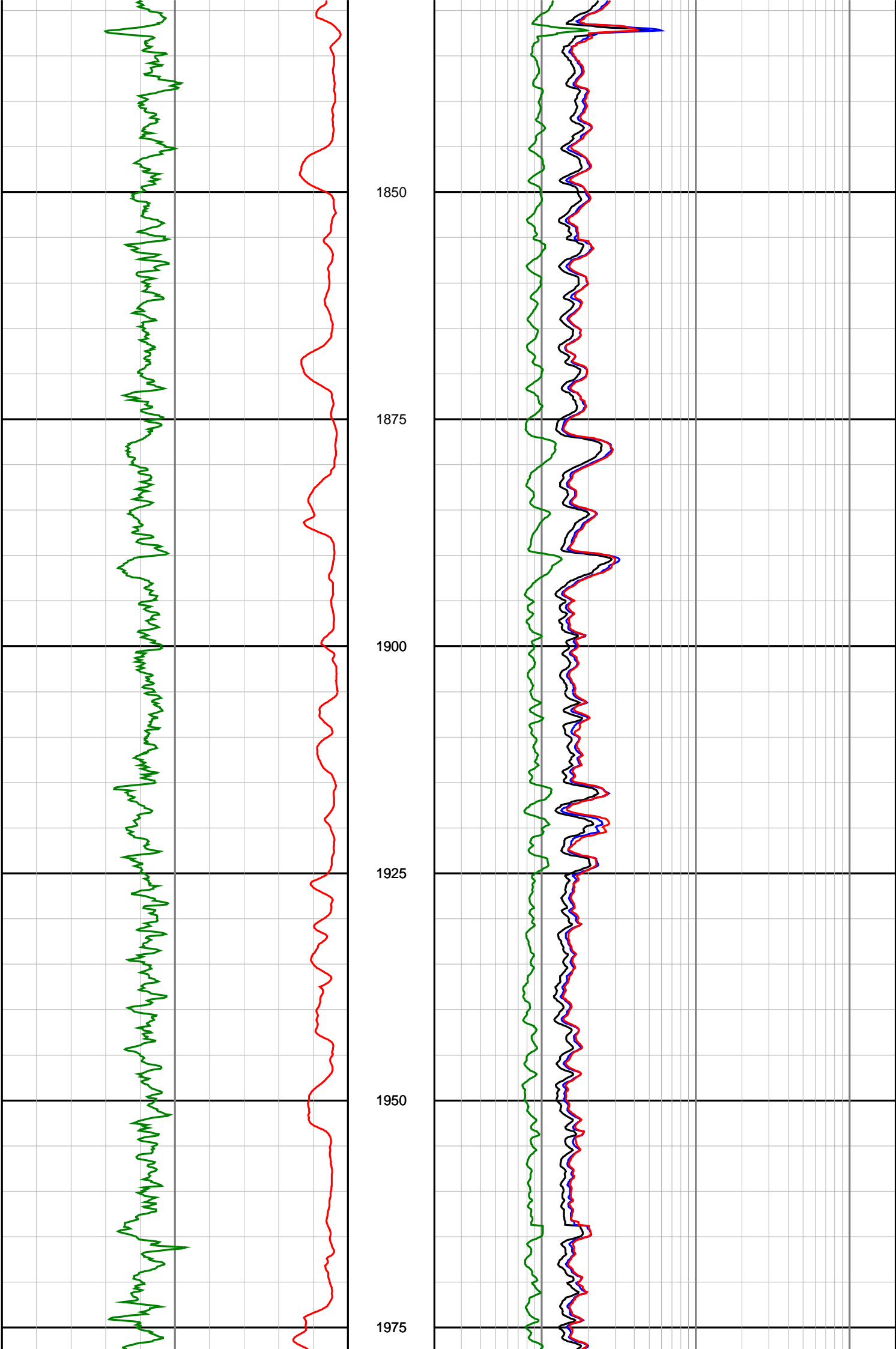
1750

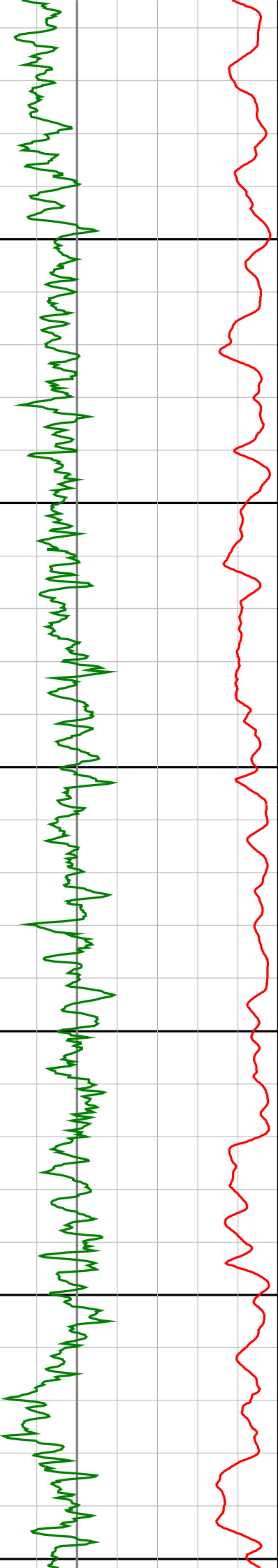
1775

1800

1825







2000

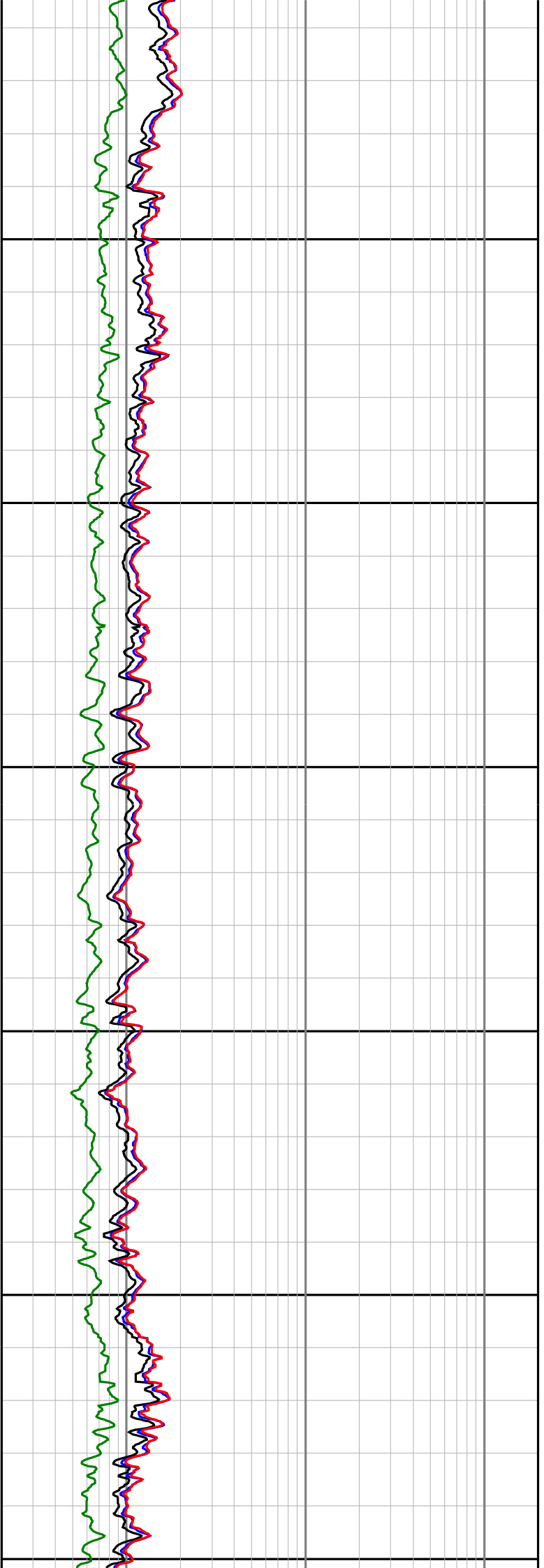
2025

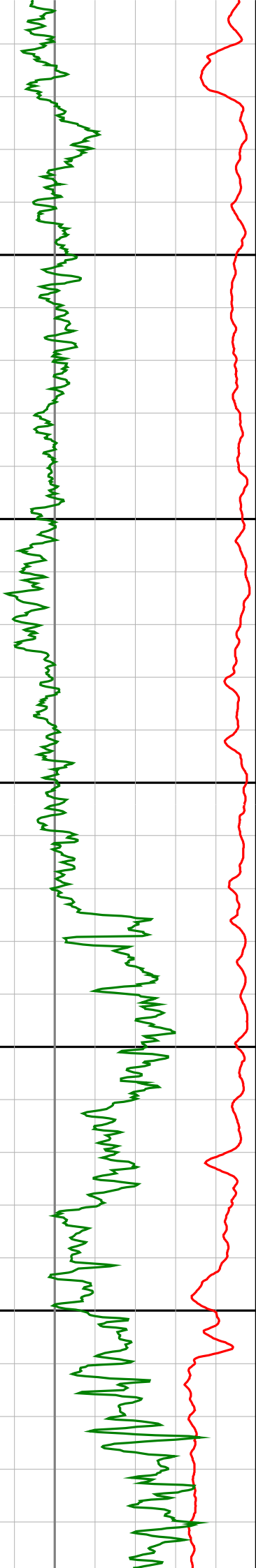
2050

2075

2100

2125





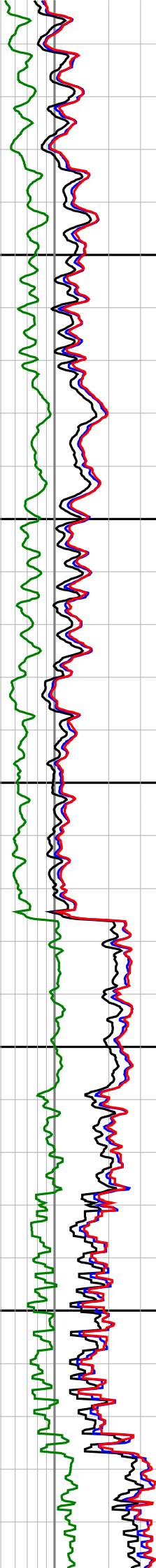
2150

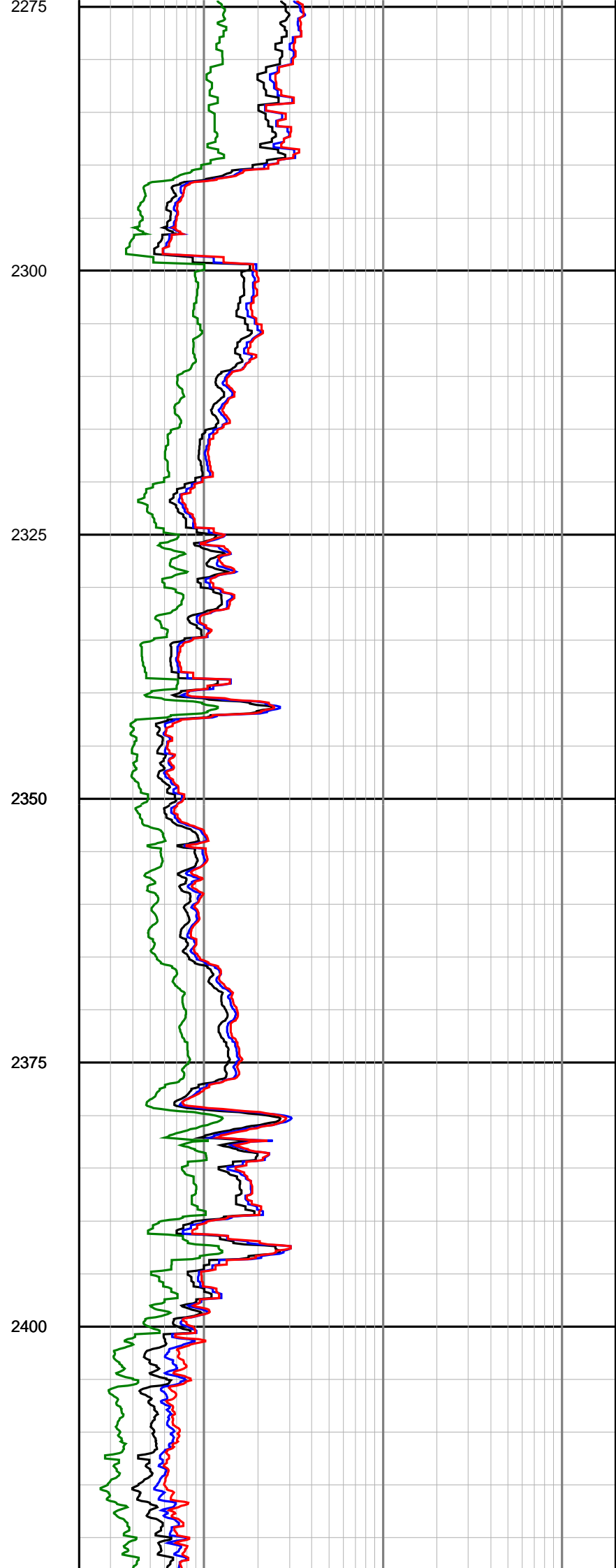
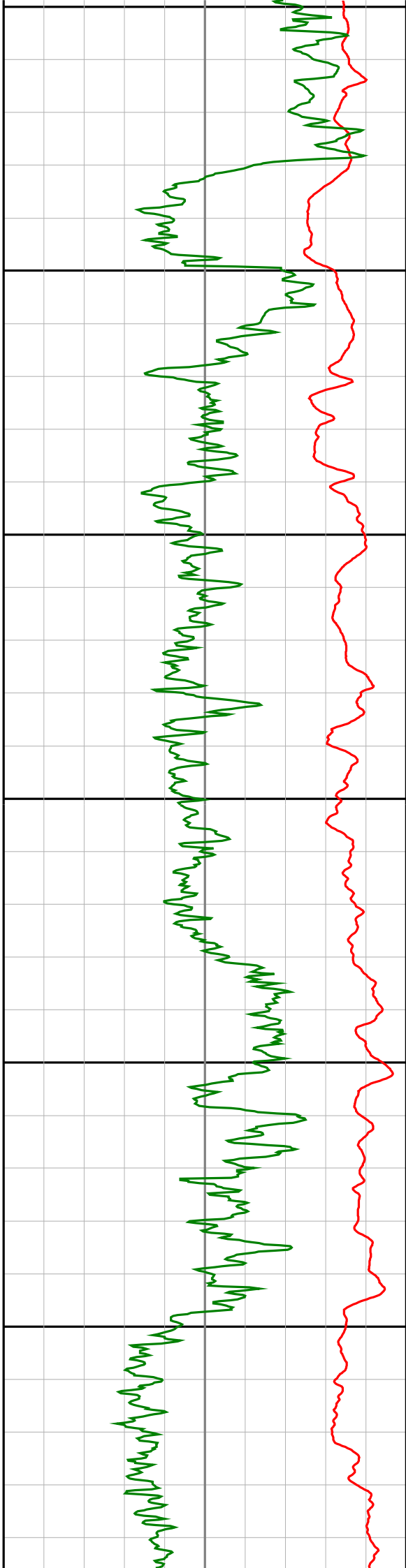
2175

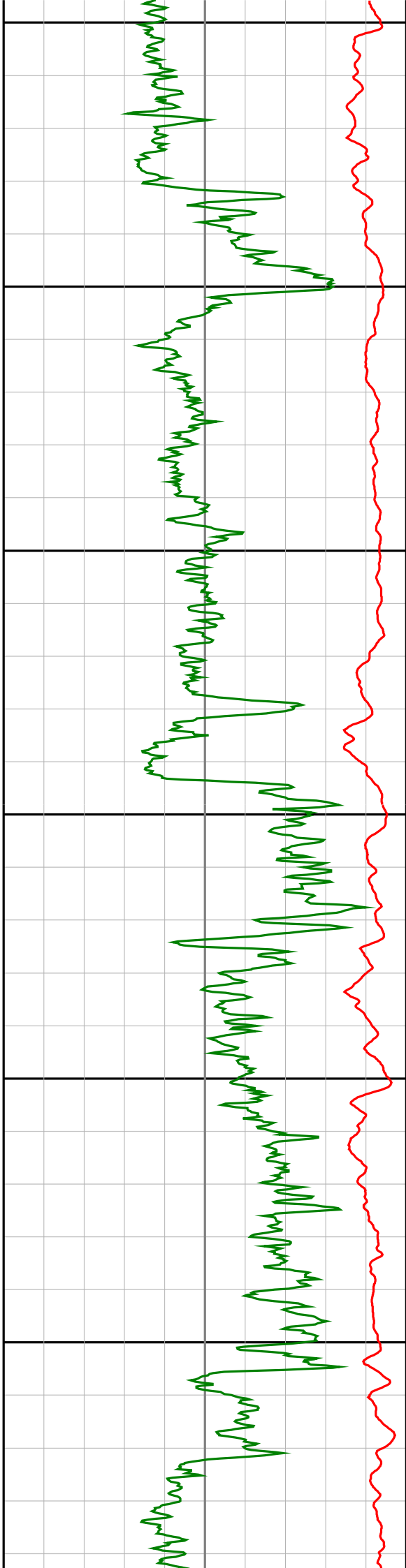
2200

2225

2250







2425

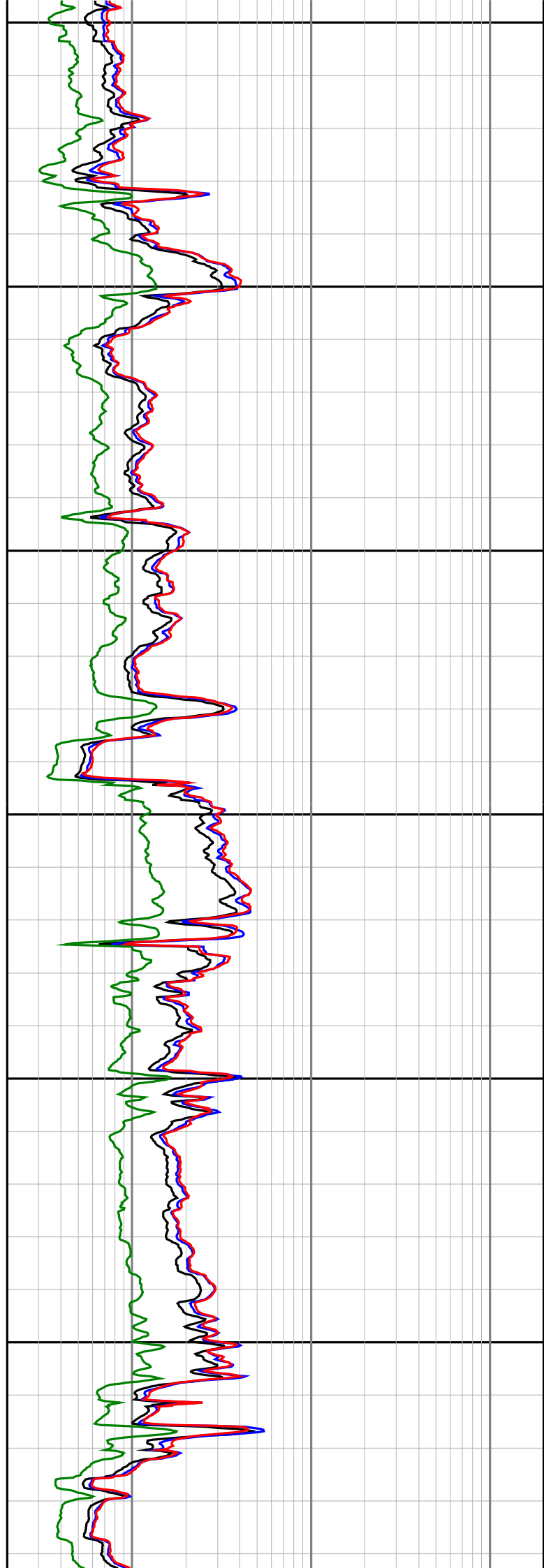
2450

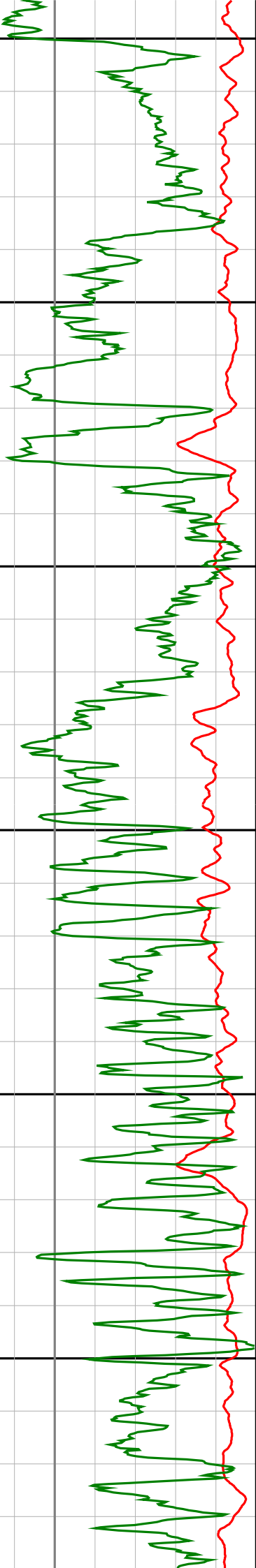
2475

2500

2525

2550





2575

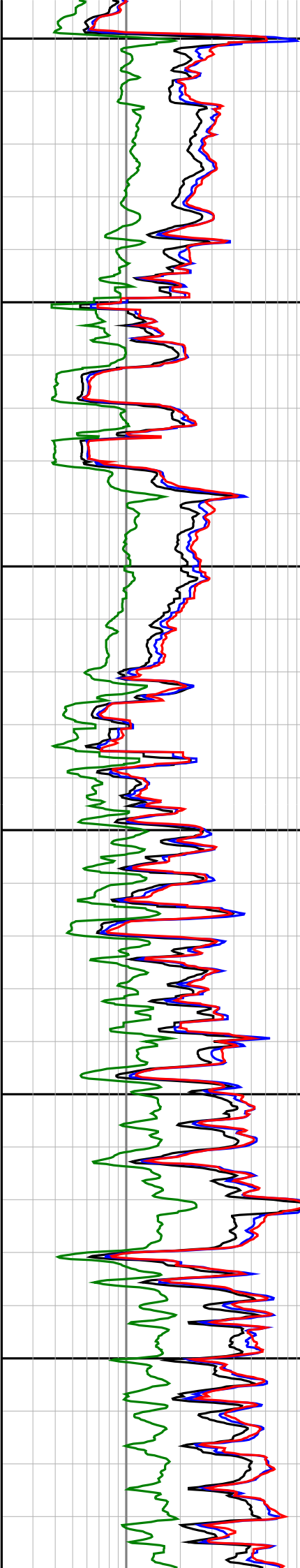
2600

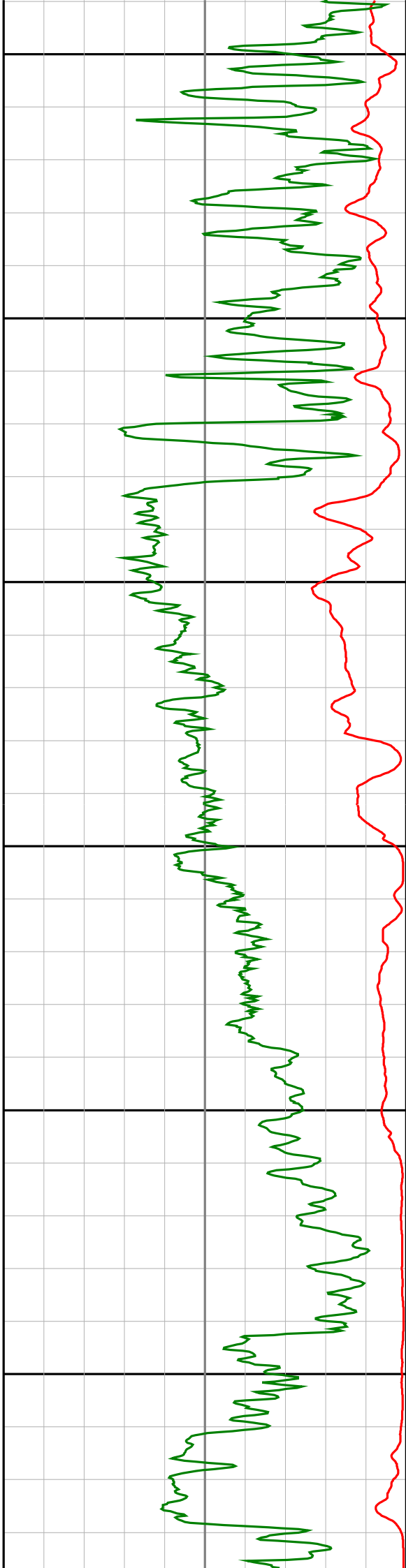
2625

2650

2675

2700





2725

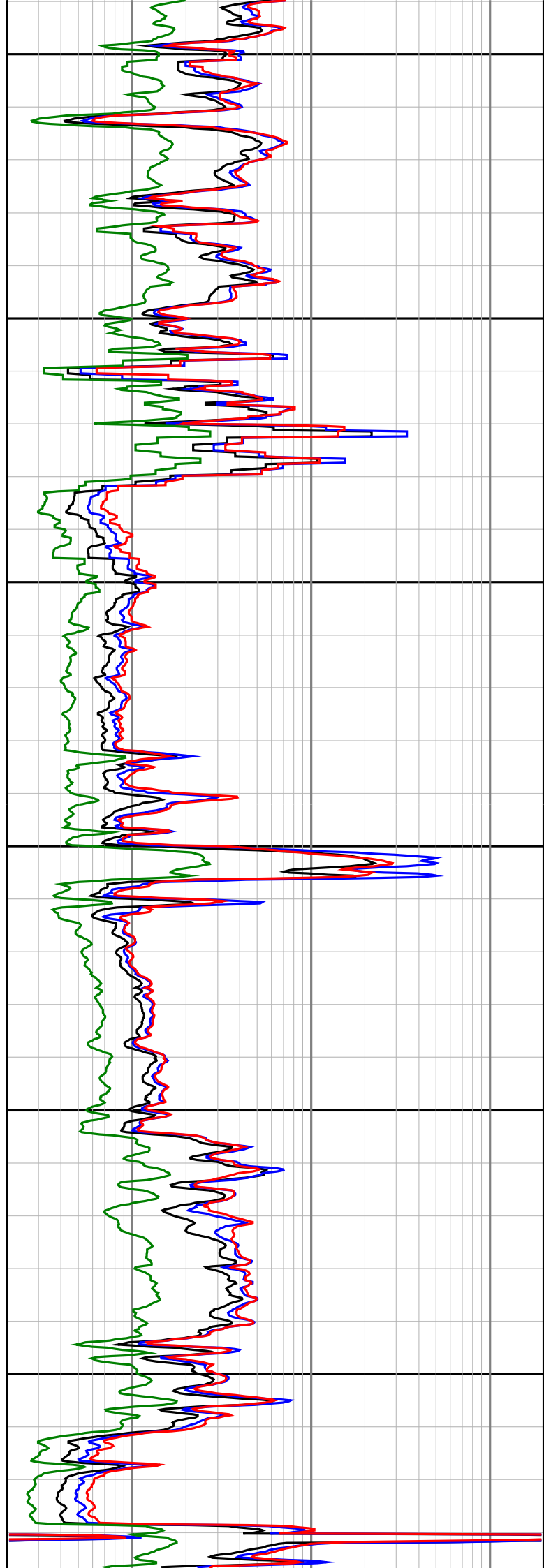
2750

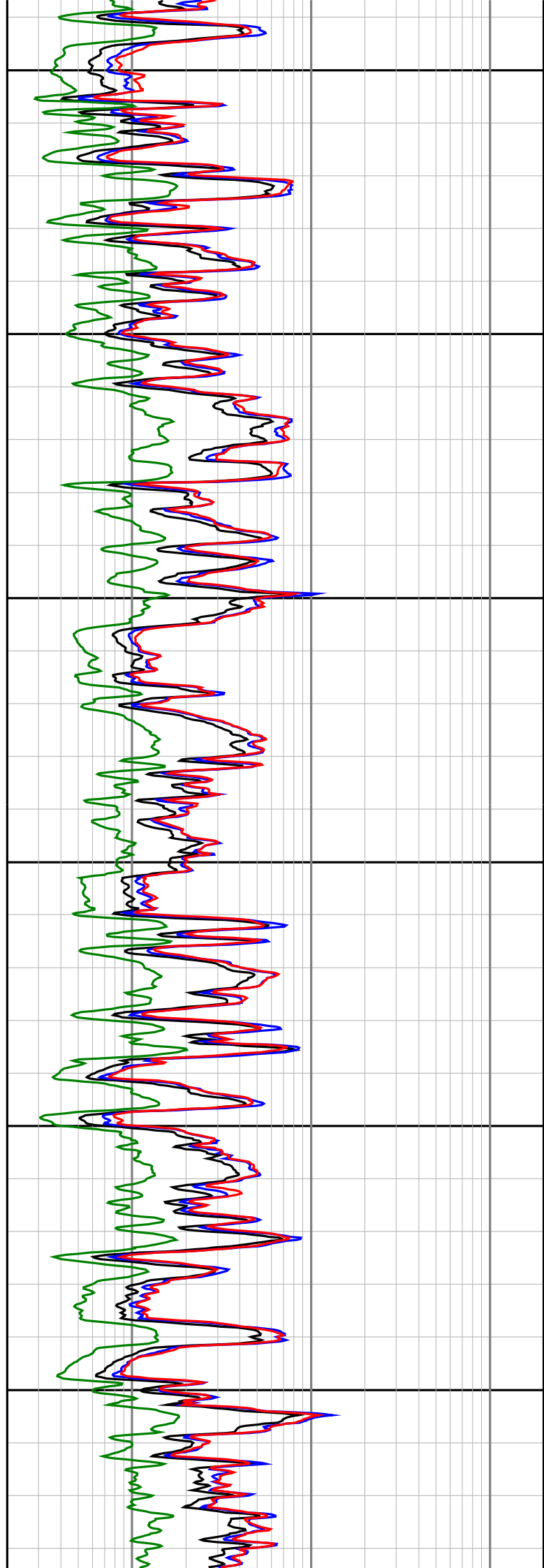
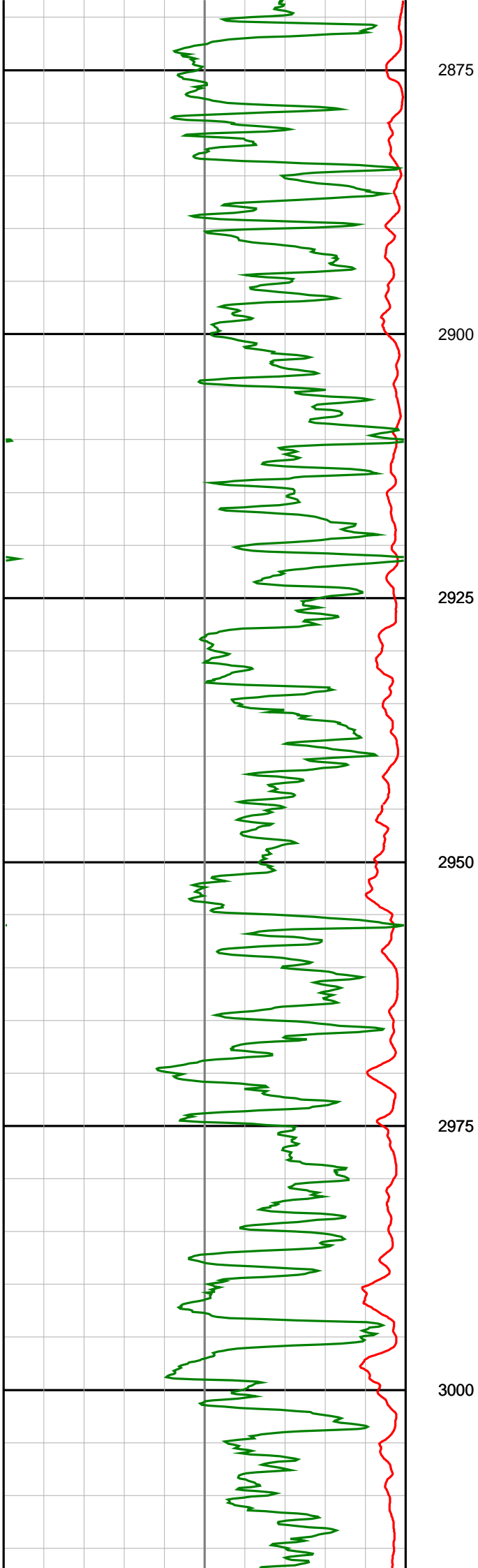
2775

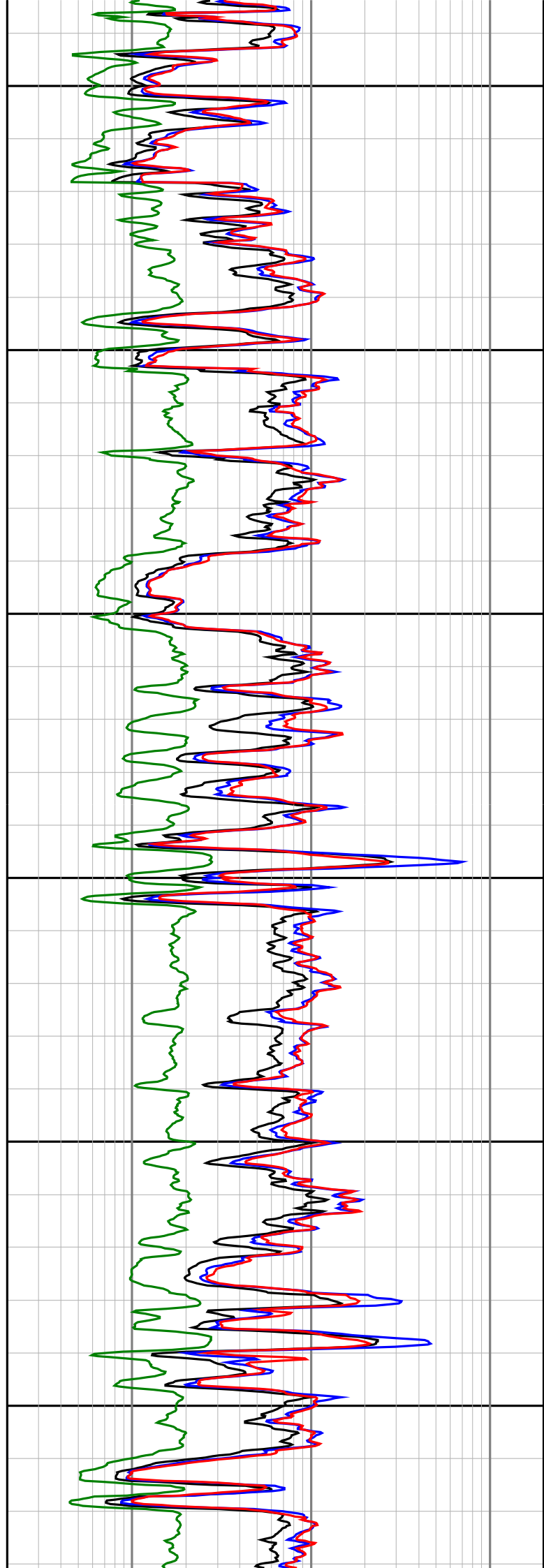
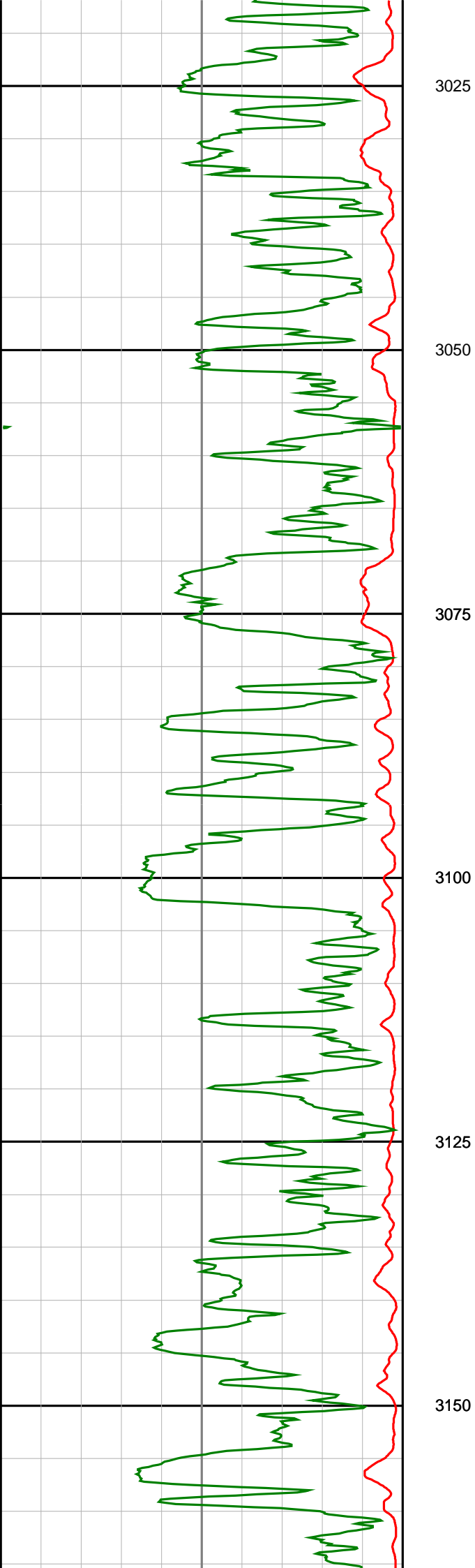
2800

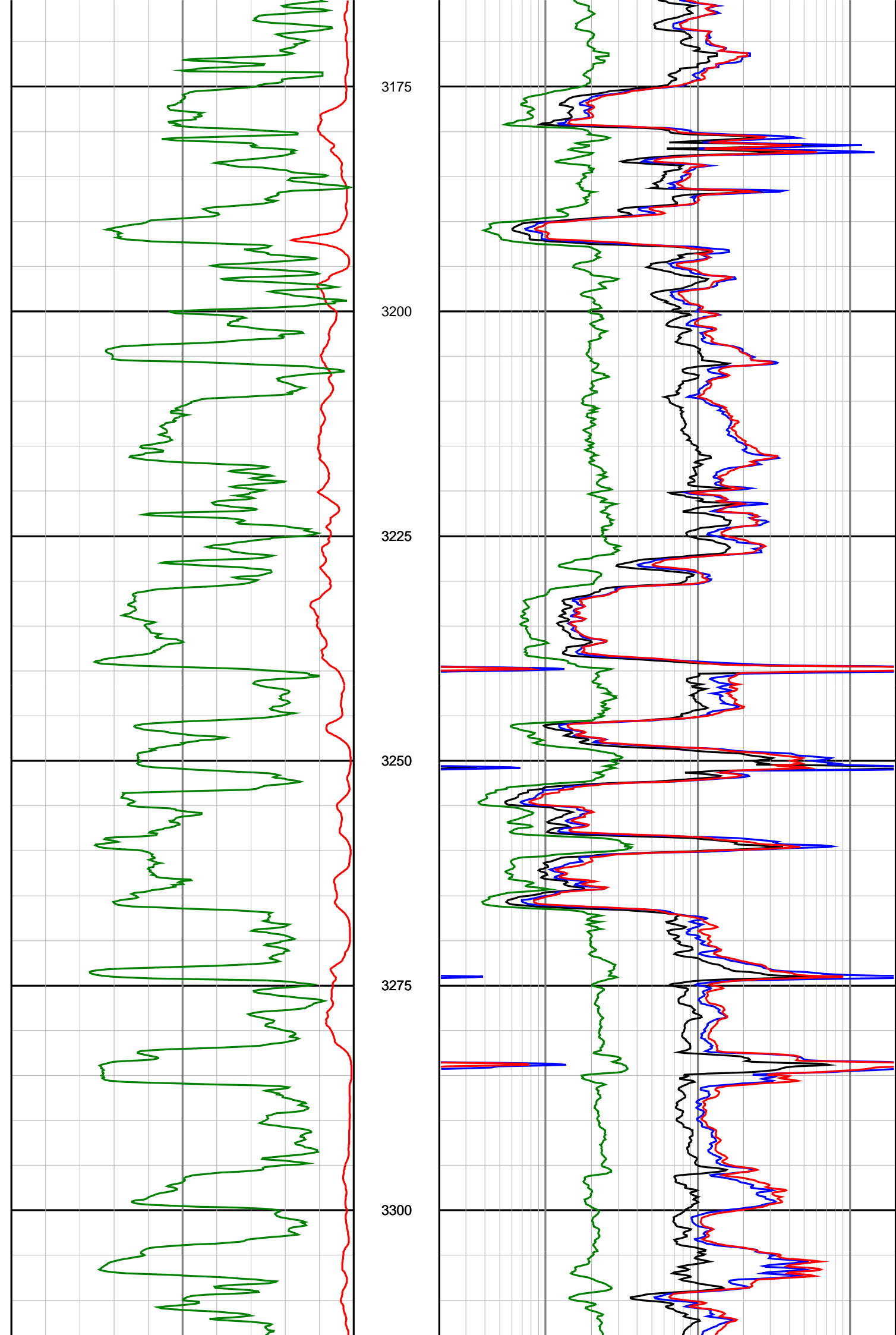
2825

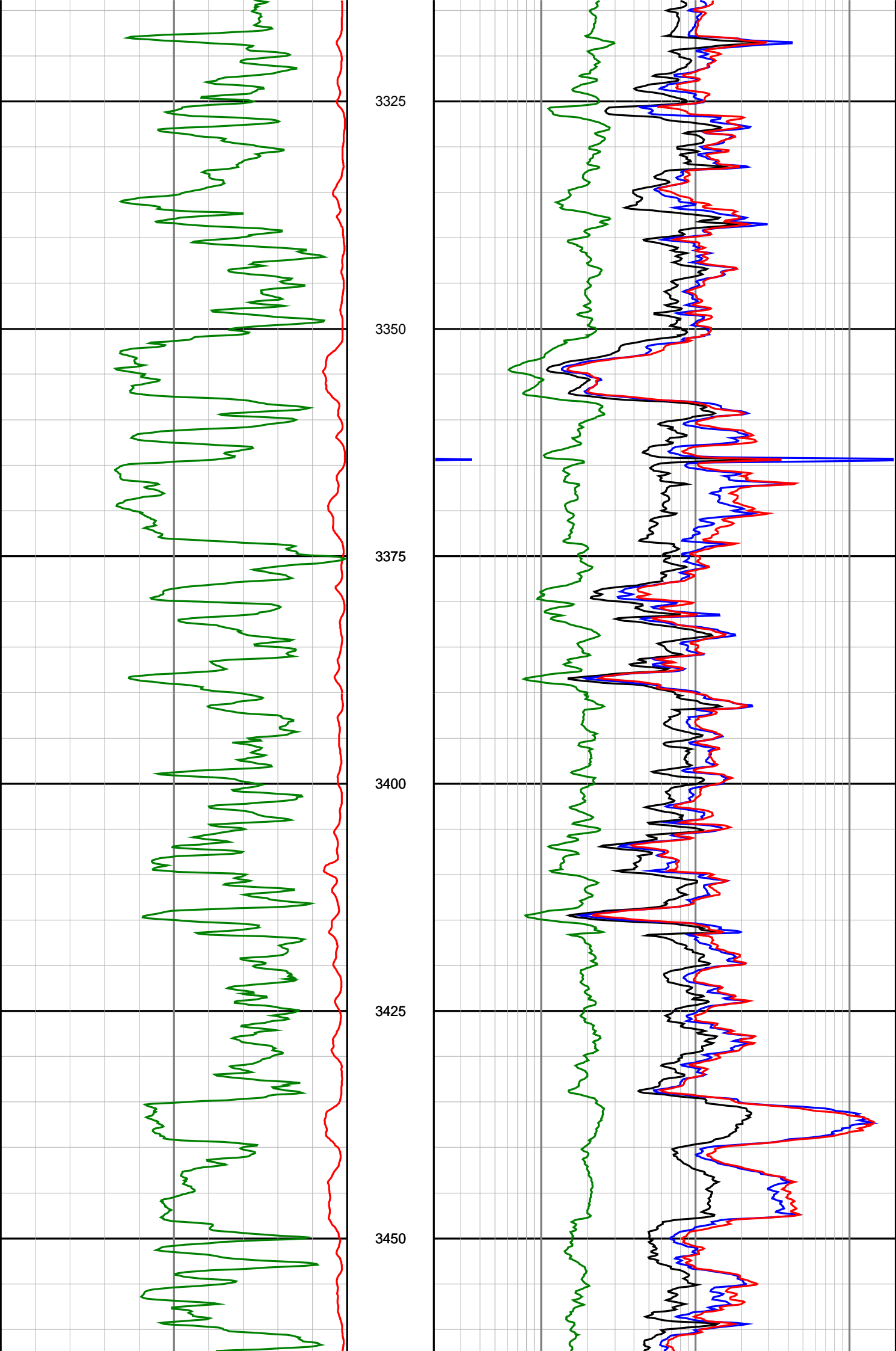
2850

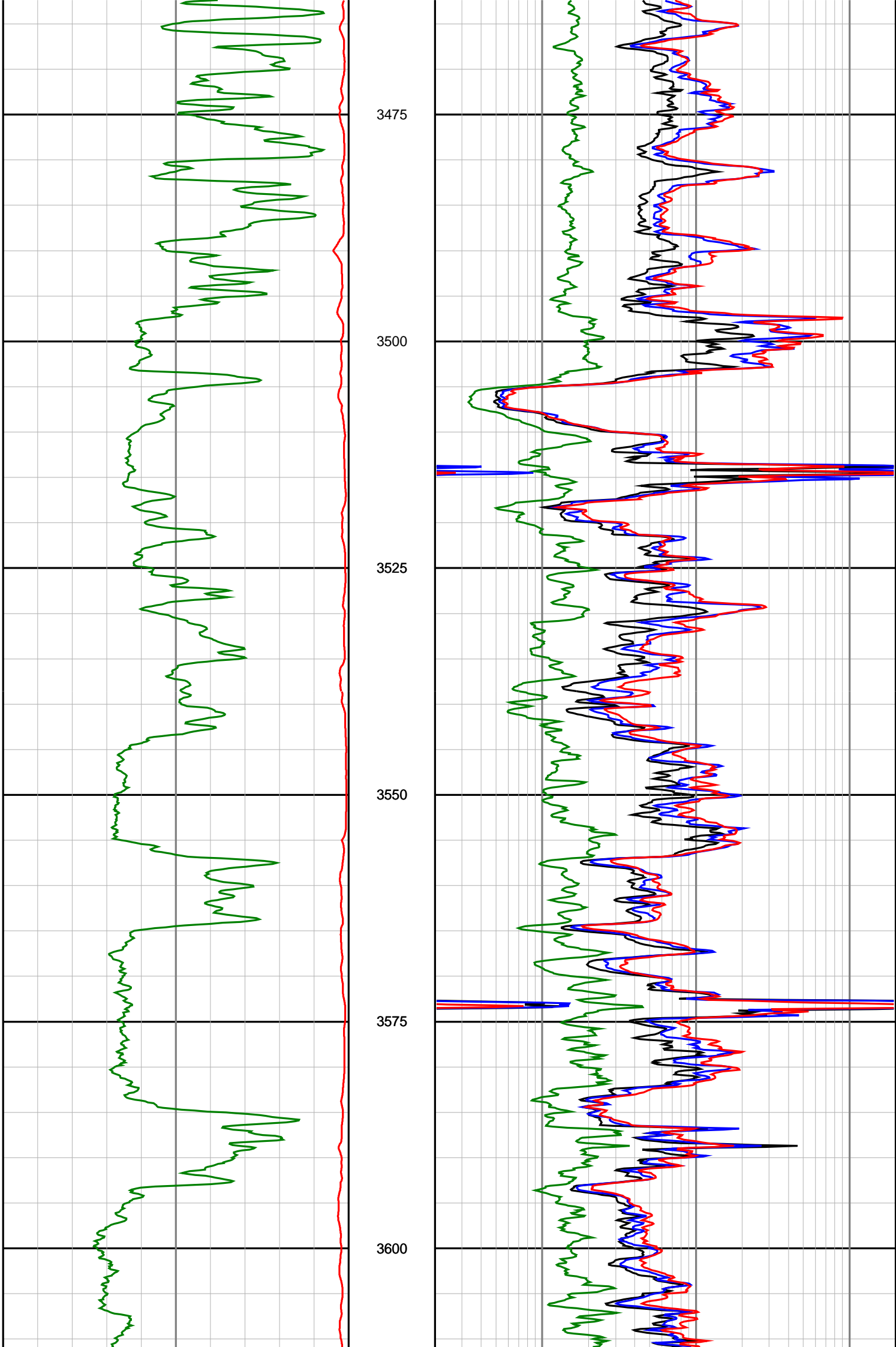


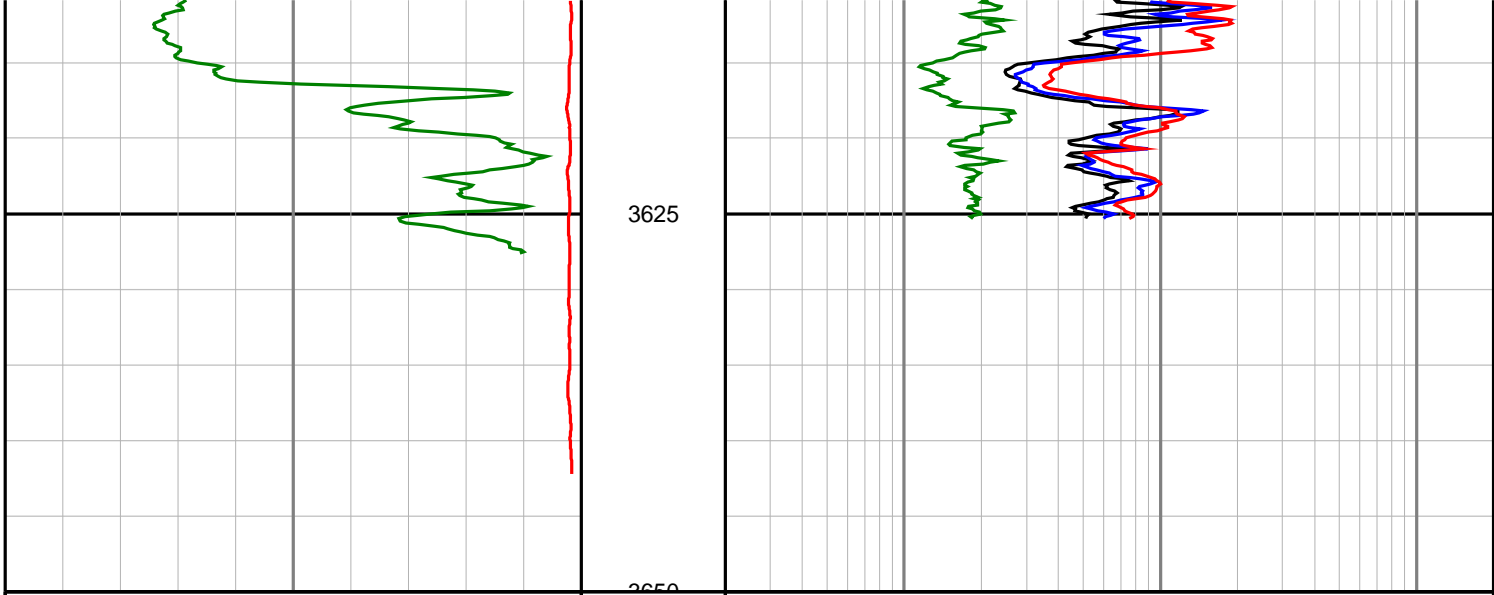












3625

<p>Gamma Ray (SGRC) api</p> <p>0 200</p>	<p>Depth MD 1:500</p>	<p>Ext Shallow Phase Res (SEXP) ohmm</p> <p>0.2 200</p>
<p>Rate Of Penetration (SROP) m/hr</p> <p>500 0</p>		<p>Shallow Phase Res (SESP) ohmm</p> <p>0.2 200</p>
		<p>Medium Phase Res (SEMP) ohmm</p> <p>0.2 200</p>
		<p>Deep Phase Res (SEDP) ohmm</p> <p>0.2 200</p>